



Inside La langue

Language en coulisse

March/mars 2017
ISSN: 1488-8157



From the Executive Director

Since the last issue of *Inside Language* in December 2016, other than the Board of Directors meeting of December 14 and a heavy load of ongoing project work, there have been relatively few highlights.

We are now in the last stretch of the fiscal year. We continue to work diligently on our projects which are described in the newsletter. We wish to thank our funders, in particular Immigration, Refugees and Citizenship Canada and Ontario's Ministry of Citizenship and Immigration, for their continued support.

As many project deliverables are due March 31, it will be a busy next few weeks — as always at this time of year. We are also preparing for our comprehensive external annual audit.

We recently sent out an invitation to all of our stakeholders to apply for positions on the Centre's Board of Directors. As in past years, the selection process promises to be arduous. At the Annual General Meeting this coming June, new directors will be elected.

We appreciate your interest in the Centre's work.

-François Bélisle

Message du directeur général

Depuis notre dernier numéro de *La langue en coulisse*, publié en décembre 2016, outre la réunion de notre Conseil d'administration du 14 décembre ainsi qu'une lourde charge de projets, il y a relativement peu de nouvelles importantes à communiquer.

Nous sommes dans la dernière ligne droite de notre exercice financier et nous continuons à travailler fort à nos projets. Nous désirons remercier nos bailleurs de fonds, en particulier Immigration, Réfugiés et Citoyenneté Canada ainsi que le ministère des Affaires civiles et de l'Immigration de l'Ontario, pour leur appui continu.

Puisque l'échéance de nombreux livrables est le 31 mars, les prochaines semaines seront très occupées, comme c'est toujours le cas à cette période de l'année. Nous nous préparons également pour la vérification externe annuelle.

Nous avons récemment lancé une invitation à tous nos intervenants pour combler des postes au Conseil d'administration du Centre. Comme par les années passées, le processus de sélection s'annonce difficile. De nouveaux administrateurs seront élus à l'Assemblée générale annuelle qui aura lieu en juin.

Merci de l'intérêt que vous portez aux activités du Centre.

-François Bélisle



Portfolio-Based Language Assessment

With funding from Immigration, Refugees and Citizenship Canada (IRCC) and the Ministry of Citizenship and Immigration (MCI) Ontario, CCLB continues to provide support to administrators and instructors as Portfolio-Based Language Assessment (PBLA) expands across Canada.

The first three cohorts consisting of approximately 300 representatives from the Atlantic region, Ontario, Saskatchewan, Alberta, Manitoba and British Columbia continue to assist classroom instructors as they implement PBLA in their own classrooms through the use of task-based planning and assessment. Cohort four with approximately 100 participants from Ontario, the West Coast and a few representatives from the Atlantic region, continue to work with classroom instructors.

Fifty certified PLBA Lead Instructors from MCI Cohort A in Ontario are actively supporting classroom instructors implementing PBLA. MCI Cohort B PBLA Lead Instructors are also working directly with classroom instructors implementing PBLA.

The six-week online course “Introduction to PBLA for new Classroom Instructors” was offered from January 18 to March 1 and February 15 to March 29. Approximately 105 classroom instructors from a variety of provinces took part. The next sessions will be held in April. To register their new Classroom Instructors, Program Administrators should contact CCLB at training@language.ca.

The PBLA team continued to pilot several projects early this winter. A PBLA Lead Teacher Prior Learning Assessment Review (PLAR) process is being developed as an expedited but rigorous way to certify classroom teachers experienced in PBLA as new Lead Teachers. Insight from the pilot will inform revisions. Once finalized, information about the PBLA PLAR process will be distributed to programs. Administrators can contact Rana Ashkar rashkar@language.ca at CCLB for further information regarding PBLA PLAR. The PBLA Practice Review Framework pilot will inform revisions to the framework and processes in preparation for a national roll-out by engaging representatives of five programs across the country and IRCC settlement officers. Participant feedback will be key to the ongoing improvement and accountability of PBLA and incorporated into revisions. The PBLA Multi-Level Module Pilot has given teachers an opportunity to pilot and provide feedback on the multi-level modules.

A big thank you to all the teachers who piloted these modules, as your valuable feedback will support the development of future multi-level modules.

The winner for the ‘draw’ is Kelly Morrissey. Congratulations on winning the draw! Further updates regarding these exciting new activities will be provided in the spring.

CLB: ESL for All Support Kit

With funding from Immigration, Refugees and Citizenship Canada (IRCC), CCLB continues with the development of the *CLB: ESL for All Support Kit*. The Support Kit is now in the final stages of revision, based on expert reviewers' feedback. An advisory committee consisting of those involved in funding, CLB experts and literacy practitioners was also established to review the content and provide input on development.

The objective of the Literacy Support Kit is to support instructors working with learners with literacy needs in a variety of classroom settings. It will include information and examples for planning literacy instruction and assessment in a way that is consistent with PBLA, suggestions for supporting ESL Literacy learners in multi-level literacy classes and mainstream ESL classes, ideas for using the Continuum of Literacy Skills in the CLB: ESL for ALL document, and sample resources for literacy instruction and assessment.

This resource will be available in the spring of 2017 for instructors to help improve the effectiveness of teaching learners with ESL literacy needs.

Remote Assessment

CLBPT and BTC remote assessments continue to be offered in select regions across Canada. The option of remote assessment is a viable, cost-effective alternative to itinerant assessment. It has provided approximately 600 clients living in areas without an assessment centre the opportunity to access assessment and placement into a language program. This has happened much quicker than if they had had to wait for an itinerant assessment.

Currently remote CLBPT assessments are conducted through sites in Thunder Bay, Winnipeg, Calgary, and Guelph while BTC remote assessments are conducted through sites in Ottawa and Bathurst. In the coming months, Ottawa will be set up to administer CLBPT remote assessment while Windsor will be set up to administer BTC remote assessment. CCLB has been funded by both IRCC and MCI to continue implementation of remote assessment and is in discussion with both funders regarding its expansion.

CLB-LPT Online

Under funding from the Ministry of Citizenship and Immigration (MCI), adaptation of the CLB-LPT face-to-face training to an online format continued. In December, 10 CLARS assessors participated in a field test of the online course. Feedback from these individuals was very positive with the majority indicating they were satisfied or very satisfied in terms of content of the course, organization of the course, how the course met their personal goals, the clarity of the presentation, and their overall satisfaction upon completion. It has not yet been determined when the training will be accessible; however, CCLB and MCI are working together on its launch.

Classroom Tools and Assessor Training

The Ministry of Citizenship and Immigration (MCI) continues to fund instructor and assessor training in Ontario. In December CCLB and MCI worked together to formulate and circulate a survey for ESL instructors in order to better inform future decisions on tool development and training. Results of the survey have been compiled and MCI and CCLB are now considering next steps based on feedback. A *CLB 5-10 Exit Assessment Tasks* session was also held for instructors during the Ottawa Carleton District School Board PD day in February under the MCI agreement.

A number of fee-for-service assessor-related trainings were also held between December and February. A total of 13 participants attended CLBPT trainings in Victoria and Regina. These individuals are now in the process of completing their certification. Saskatoon held a calibration session for 8 assessors and Regina and Calgary held face-to-face CLB-LPT sessions for 12 individuals.

To view a list of workshops and training that CCLB offers, please visit: http://www.language.ca/index.cfm?Voir=sections&Id=17432&M=4030&Repertoire_No=2137991327.

Any inquiries related to training can be directed to training@language.ca.

CELBAN

In January 2017 Touchstone Institute submitted its Annual Report on CELBAN Test Administration for 2016 in accordance with the service agreement between CCLB (the CELBAN test owner) and Touchstone Institute (the operator of the national administration centre for CELBAN). The report covered activities during the period of January 1 to December 31, 2016 – the last year of the agreement – including the number of CELBAN test administrations per CELBAN test site by region (and broken down by test type), revenues and expenses, number of new sites, status of the CELBAN Assessor database, status of performance targets, review of 2016 major milestones, and a look ahead to 2017.

The last reporting quarter from October 1 to December 31, 2016 was the biggest ever in the history of CELBAN with 2565 complete tests plus 65 partial tests delivered.

2016 saw a 32% increase in the number of CELBAN tests administered compared with 2015. The most significant gains were in British Columbia and Manitoba, as these provinces each benefited from the launch of new test sites at the beginning of the year. And for the first time CELBAN became accessible on the East Coast as a new test site was opened in Halifax in December.

As of January 2017, the Centre has a new 3-year service agreement with Touchstone.



Niveaux de compétence linguistique canadiens : Français, langue seconde pour adultes moins alphabétisés

Grâce au financement du ministère des Affaires civiles et de l'Immigration de l'Ontario, le CNCLC a développé le document NCLC : Français langue seconde pour adultes moins alphabétisés (NCLC : FLS pour AMA).

Le document décrit les besoins des apprenants moins alphabétisés ainsi que les aptitudes et les compétences en littératie qu'ils auront à acquérir tout au long de leur parcours en français langue seconde. Il a été conçu à l'intention des instructeurs qui œuvrent dans des classes d'alphabétisation désignées, composées uniquement d'apprenants moins alphabétisés, ou dans des classes ordinaires de français langue seconde (FLS) qui intègrent des apprenants moins alphabétisés.

Le document sera bientôt disponible en ligne sur le site www.language.ca et sur Tutela.

NCLC : FLS pour AMA Trousse de soutien

L'équipe du CNCLC poursuit son travail de développement de la Trousse de soutien *Niveaux de compétence linguistique canadiens : Français langue seconde pour adultes moins alphabétisés*, grâce au financement d'Immigration, Réfugiés et Citoyenneté Canada.

L'objectif de la trousse de soutien consiste à expliquer aux instructeurs comment utiliser le document *Niveaux de compétence linguistique canadiens : Français langue seconde pour adultes moins alphabétisés* dans la planification de leur cours et des évaluations.

Outre le document lui-même qui offre diverses ressources pédagogiques, la trousse de soutien sera accompagnée d'un module de formation en ligne, d'une baladodiffusion axée sur la littératie numérique et d'une vidéo axée sur certaines tâches authentiques.

La trousse sera disponible au printemps 2017 pour les instructeurs œuvrant dans des classes de français langue seconde où l'on retrouve des adultes avec des besoins en alphabétisation.

L'évaluation linguistique basée sur le portfolio

L'évaluation linguistique basée sur le portfolio (**ELBP**), subventionnée par Immigration, Réfugiés et Citoyenneté Canada et le ministère des Affaires civiles et de l'Immigration de l'Ontario, est un outil d'évaluation mis à la disposition des instructeurs de français langue seconde.

Le CNCLC a commencé à développer des outils pour soutenir les instructeurs dans l'implantation du portfolio en salle de classe.

Le développement d'une formation autoportante est en cours et sera offerte aux nouveaux instructeurs ou aux instructeurs qui n'ont pas eu la possibilité de participer à la formation du printemps ou de l'automne dernier. Cette formation vise à soutenir les instructeurs dans la mise en œuvre du portfolio en classe.

Canadian Language Benchmarks: An Online Orientation To ESL For ALL

Funded by the Alberta Government, *An Online Orientation to ESL for ALL* is a 20-hour online, asynchronous training course based on Canadian Language Benchmarks: English as a Second Language for Adult Literacy Learners (ESL for ALL). This online course, developed in collaboration with Bow Valley College, supports instructors working with learners with literacy needs in a variety of classroom settings by:

- familiarizing participants with the contents of the ESL for ALL document
- offering suggestions on ways to use the resource to support planning for instruction
- providing strategies, teaching tips and best practices for working with ESL literacy learners

Participants who complete all activities and receive a 70% or higher on the four end-of-module quizzes receive a certificate via email that recognizes the course completion and 20 hours of PD time.

Since its official launch this past fall, 184 participants have self-enrolled in the course. When surveyed, respondents highlight that ease of access, simplicity, and clarity are key strengths of the online training.

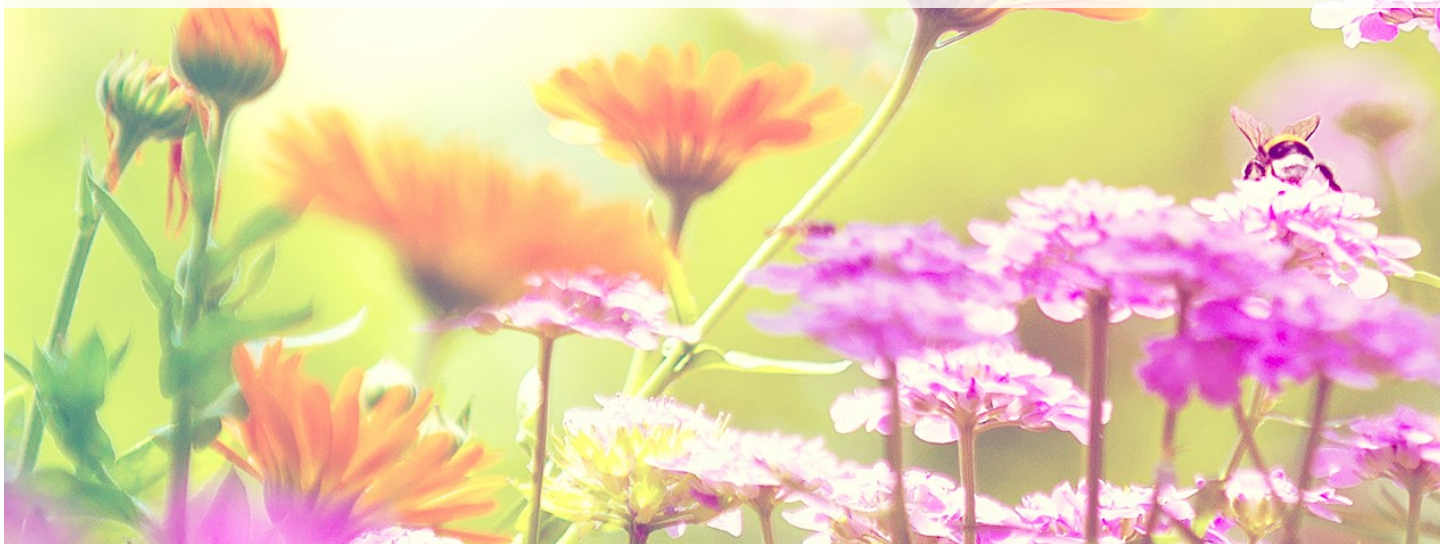
To access the course:

Go to <http://learning.language.ca>

- Create a user account
- Click “login” at the top right corner of the page
- Enter your username/password which you created for your account and click “login”
- On the home page, click “CLB Literacy Training Courses” under course categories
- Click “An Online Orientation to ESL for ALL”
- The course homepage will appear; you will receive a welcome notice and be automatically enrolled in this course

IF you are already registered on <http://learning.language.ca>, please follow the information here:

- Click on your name in the top right corner and choose "Profile"
- Click "Edit Profile" under "User Details"
- Scroll down and click on the section heading, "Your ESL community details"
- Complete the three drop-down menus in this section
- Click the Update profile button
- Return to the course, e.g. click the Dashboard link and then “An Online Orientation to ESL for ALL”
- The course should now be unlocked and you will see all content





Canadian Language Benchmarks: An Online Orientation To ESL For ALL - Webinars

As additional support to *An Online Orientation to ESL for ALL*, the Alberta Government also funded the development of two 60-minute webinars that support those wishing to enrich their learning from the online training and reach those unable to commit the time to complete it. To view these webinars, please visit:

- *Orientation to the CLB Literacy Document* <https://tutela.ca/ViewEvent?itemId=18479>
- *Using ESL for ALL to Support your ESL Literacy Learners* <https://connect.bowvalleycollege.ca/p984zzdfb3e/>



MILESTONES/ Batterie de tests de rendement (BTR)

With funding from Immigration, Refugees and Citizenship Canada (IRCC), CCLB has begun investigating possibilities for developing and implementing computer-based versions of the Milestones and Batterie de tests de rendement (BTR).

Since 2011, IRCC has entered into contribution agreements with CCLB to design, validate and pilot an English high-stakes test, Milestones, and a French high-stakes test, Batterie de tests de rendement (BTR). These tests were used in 2015-2016 for one component of the program evaluation of the Language Instruction for Newcomers to Canada (LINC) and Cours de langue pour les immigrants au Canada (CLIC) programs.



Community Engagement

CCLB participated at the TESL Ottawa Winter PD Conference held at Algonquin College on February 4. The conference hosted a number of instructors and TESL students from the Ottawa area and provided a great opportunity for CCLB to connect with the teaching community and understand their needs, and discuss current initiatives at the Centre.

Public Holidays

Please note that our offices will be closed April 14 for Good Friday, April 17 for Easter Monday and May 22 for Victoria Day.

Jours fériés

Veillez noter que nos bureaux seront fermés le 14 avril pour le Vendredi saint, le 17 avril pour le lundi de Pâques et le 22 mai pour la fête de la Reine.



Please contact us at info@language.ca in order to subscribe to our newsletter and stay up to date on all of CCLB's activities. Veuillez communiquer avec nous à info@language.ca afin de souscrire à notre bulletin et de vous informer des activités du CNCLC.



Centre for
Canadian Language
Benchmarks

Centre des niveaux de
compétence linguistique
canadiens

294, rue Albert Street, Pièce/Suite 400, Ottawa, Ontario, Canada K1P 6E6
Tél./Tel.: 613-230-7729 | Téléc./Fax: 613-230-9305
info@language.ca | www.language.ca